



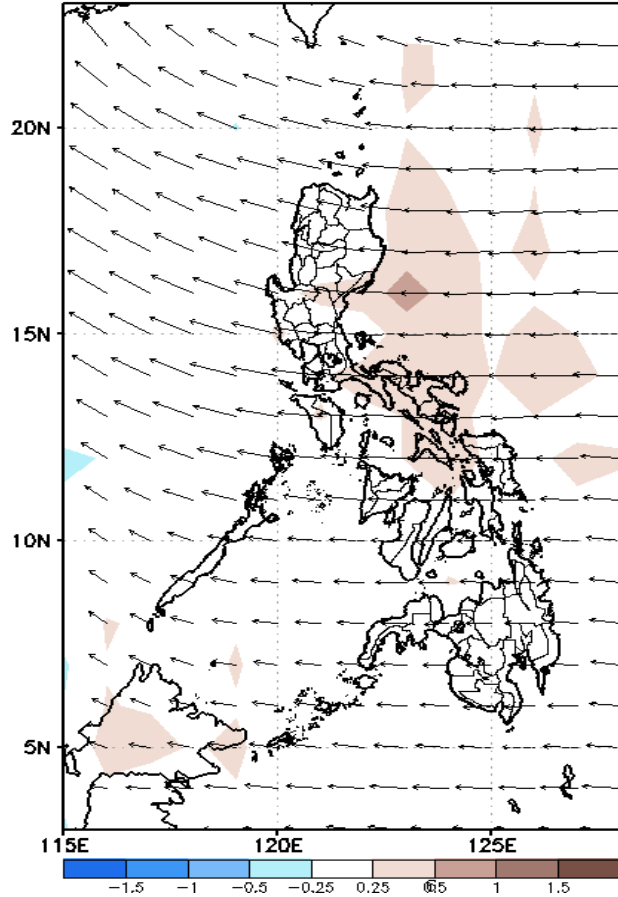
Week 1 & Week 2 Forecast for the Philippines using GEFS Model



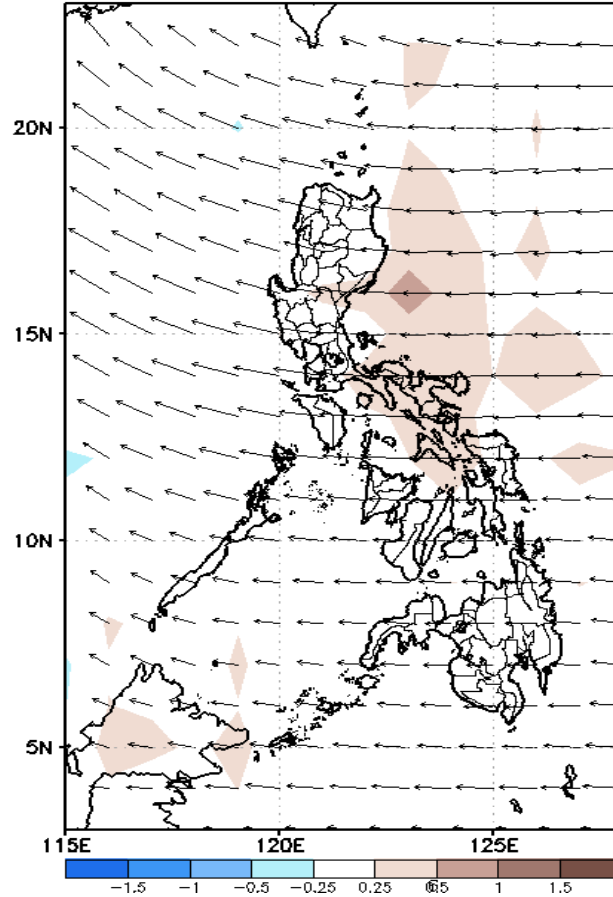
GEFS Week-1 Forecasts: Divergence & Wind Anomaly

Week 1: Aug 23-29, 2021

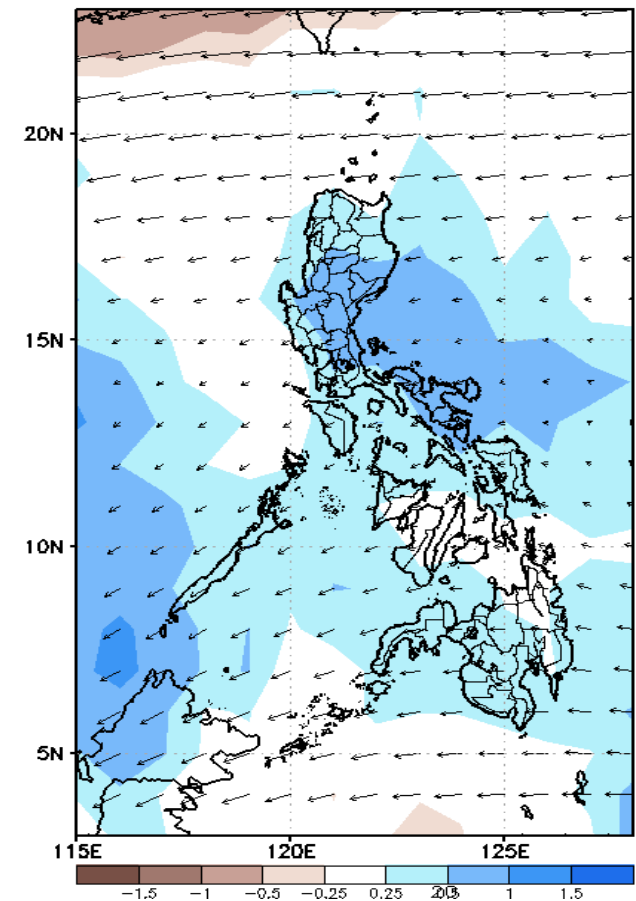
GEFS Week-1 850-hPa Divergence and Wind Anom
Valid: 20210823 - 20210829



GEFS Week-1 700-hPa Divergence and Wind Anom
Valid: 20210823 - 20210829



GEFS Week-1 200-hPa Divergence and Wind Anomaly
Valid: 20210823 - 20210829

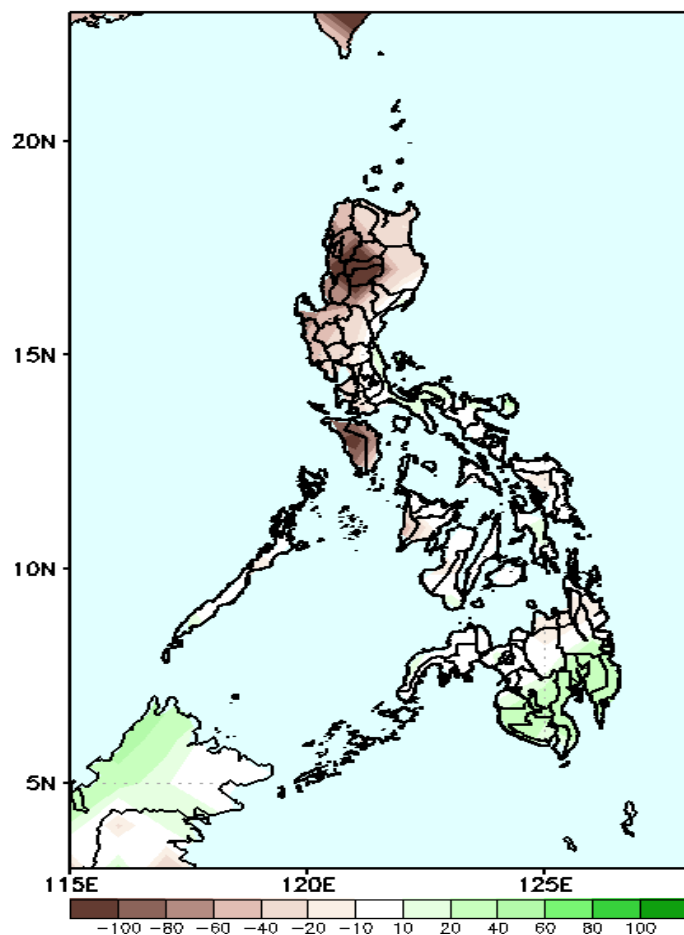


Upper and low level Divergence suggest likelihood of light precipitation in most parts of the country. Easterlies affecting most parts of the country attributing to light and moderate rains due to thunderstorms during the forecast period.

Precipitation Anomaly and Exceedance Probability > 25/50 mm

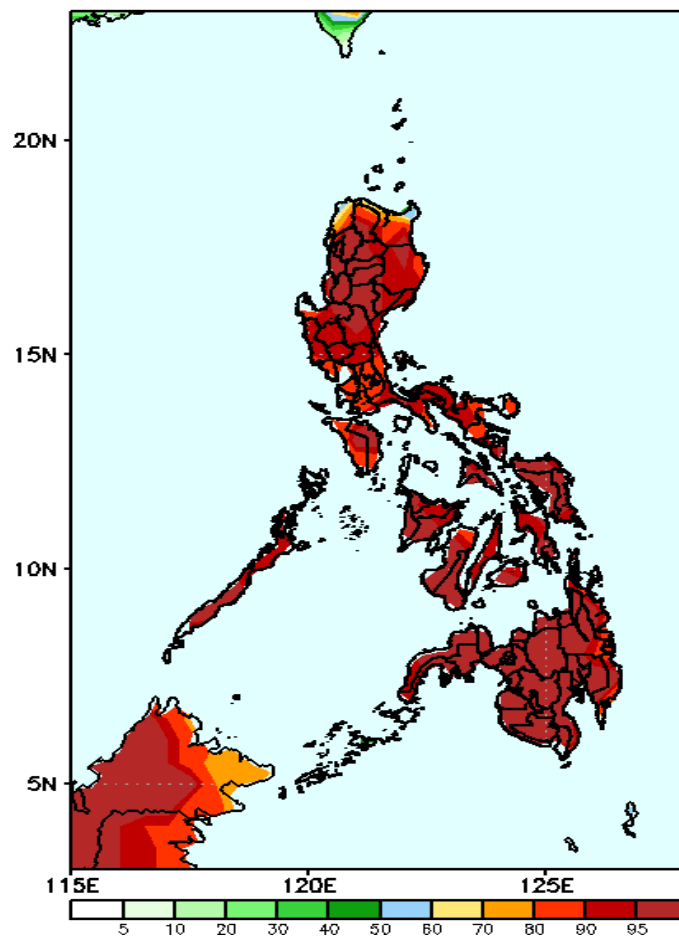
Week 1: Aug 23-29, 2021

GEFS Week-1 Precip Anomaly
Valid: 20210823 - 20210829



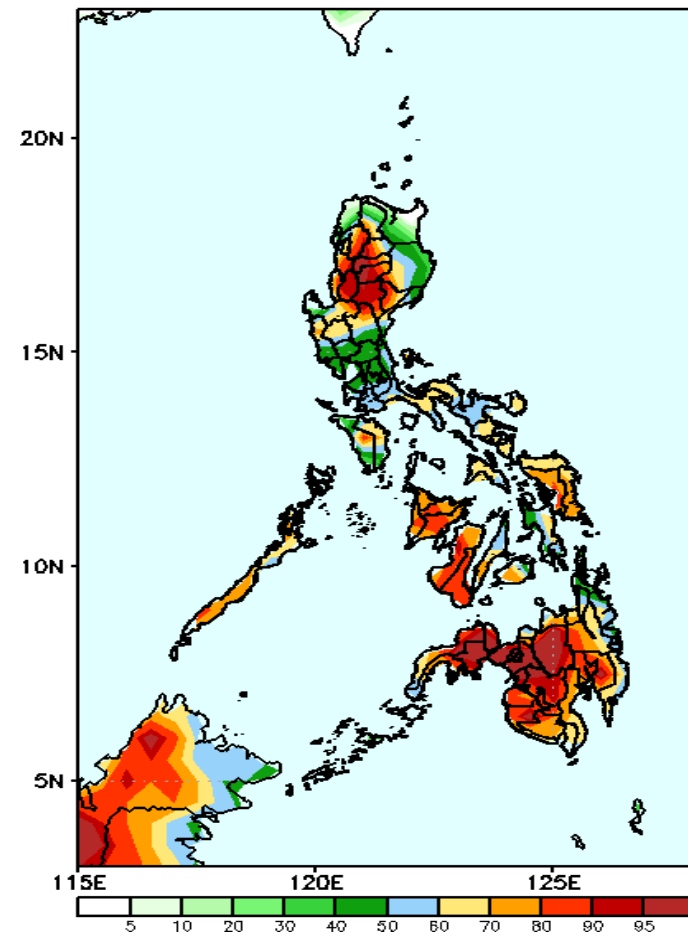
Rainfall deficit of 40-100mm is expected in most parts of Luzon while increase of rainfall of 40-80mm in southern Mindanao during the forecast period.

GEFS Week-1 Exceedance Prob. > 25mm
Valid: 20210823 - 20210829



High probability of rainfall to exceed 25mm in most parts of the country is expected during the forecast period.

GEFS Week-1 Exceedance Prob. > 50mm
Valid: 20210823 - 20210829

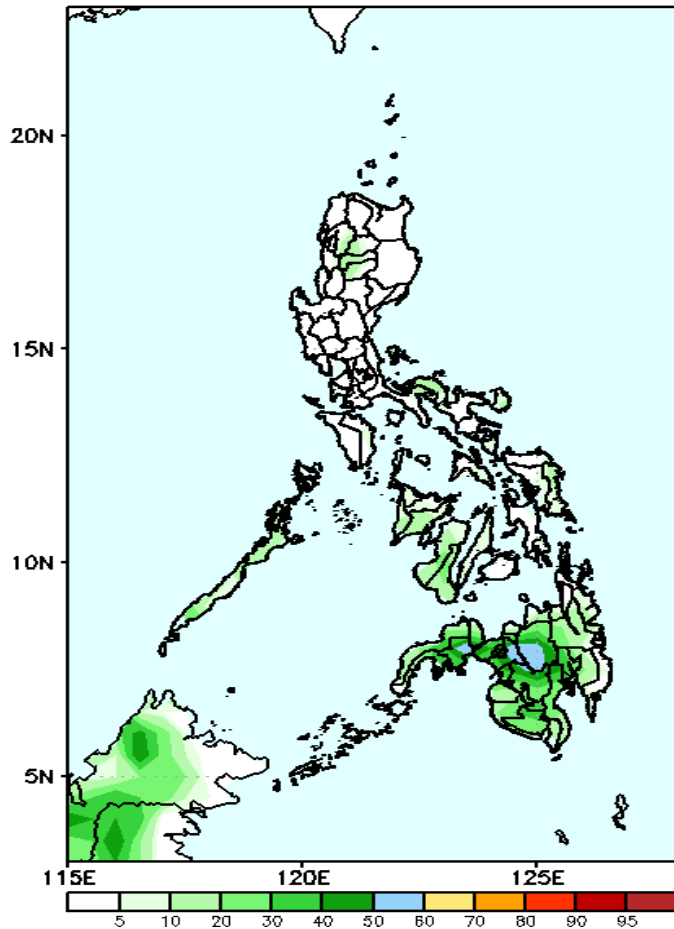


High probability of rainfall to exceed 50mm in most parts of the country except Ilocos Norte, Apayao, Cagayan, Isabela and parts of central Luzon and CALABARZON during the forecast period.

Exceedance Probability > 100/150/200 mm

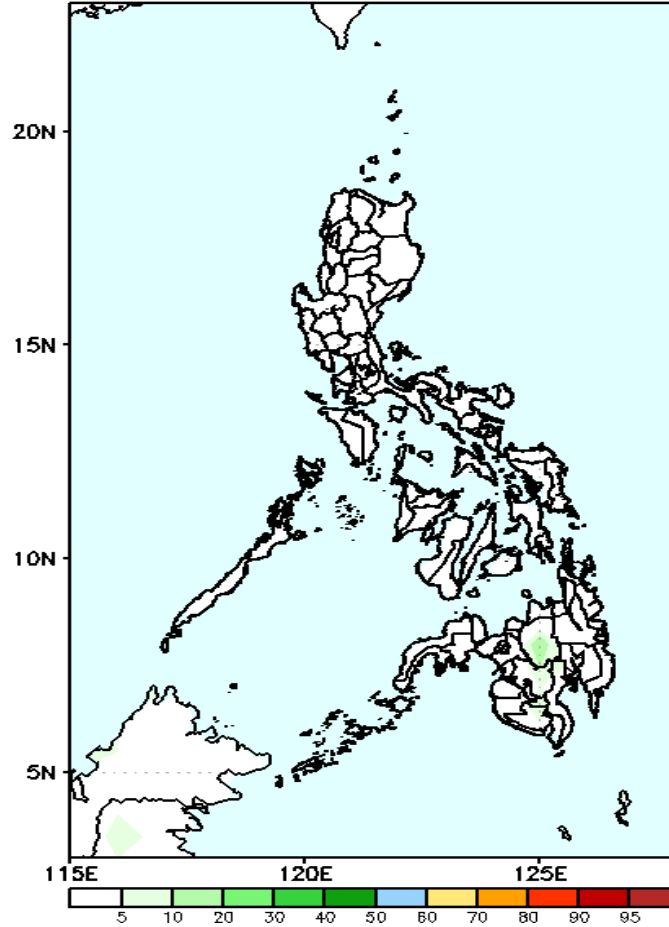
Week 1: Aug 23-29, 2021

GEFS Week-1 Exceedance Prob. > 100mm
Valid: 20210823 - 20210829



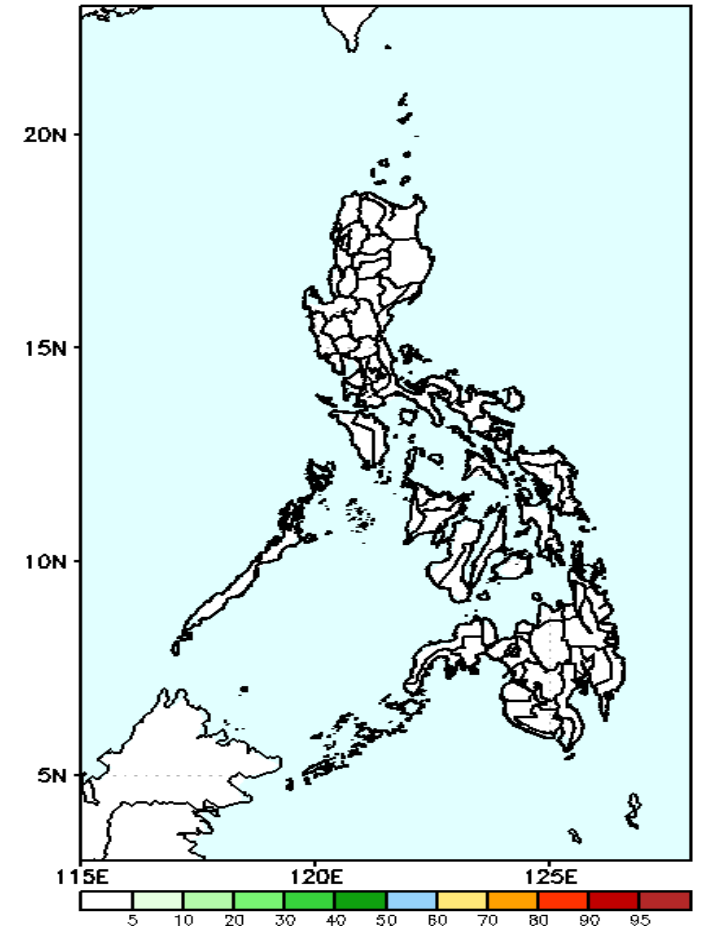
Less probability of rainfall to exceed 100mm in most parts of the country is expected during the forecast period.

GEFS Week-1 Exceedance Prob. > 150mm
Valid: 20210823 - 20210829



Less probability of rainfall to exceed 150mm in most parts of the country is expected during the forecast period.

GEFS Week-1 Exceedance Prob. > 200mm
Valid: 20210823 - 20210829



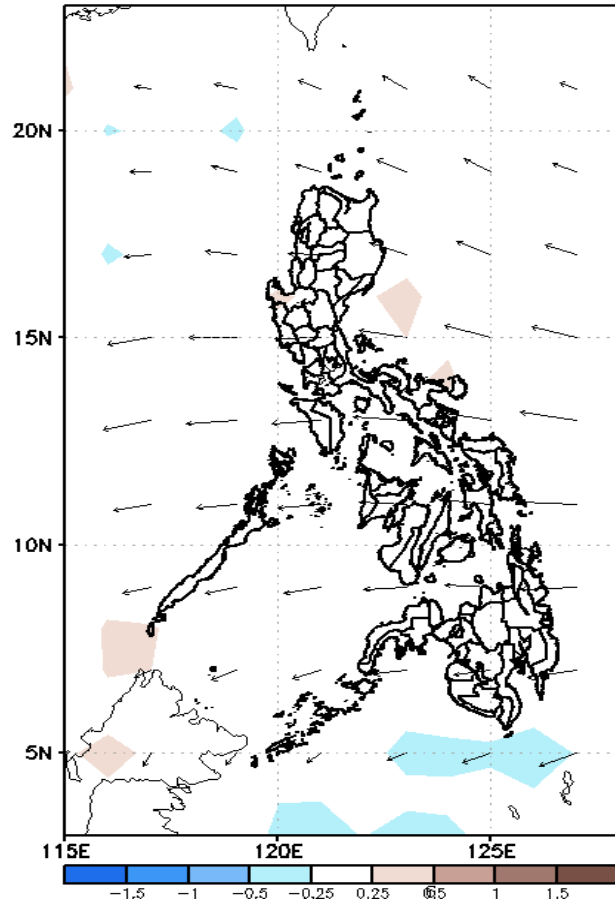
Less probability of rainfall to exceed 200mm in most parts of the country is expected during the forecast period.



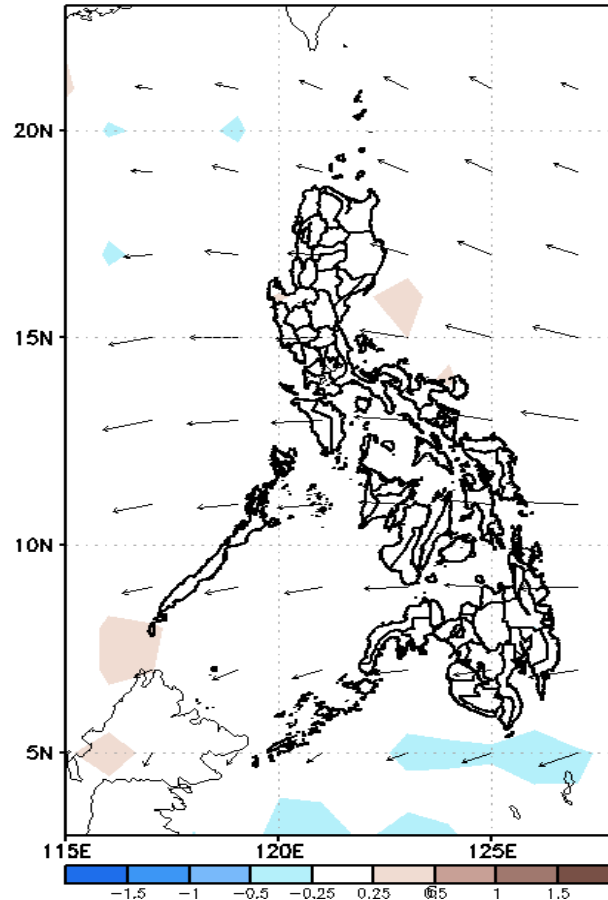
GEFS Week-2 Forecasts: Divergence & Wind Anomaly

Week 2: Aug 30-Sep 09, 2021

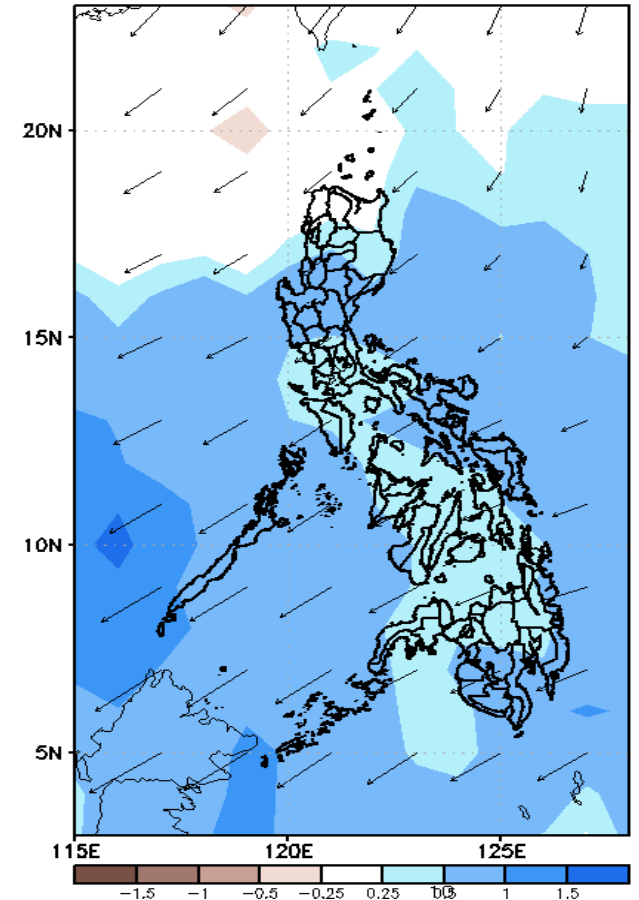
GEFS Week-2 850-hPa Divergence and Wind Anomaly
Valid: 20210830 - 20210905



GEFS Week-2 700-hPa Divergence and Wind Anomaly
Valid: 20210830 - 20210905



GEFS week-2 200-hPa Divergence and Wind Anom
Valid: 20210830 - 20210905

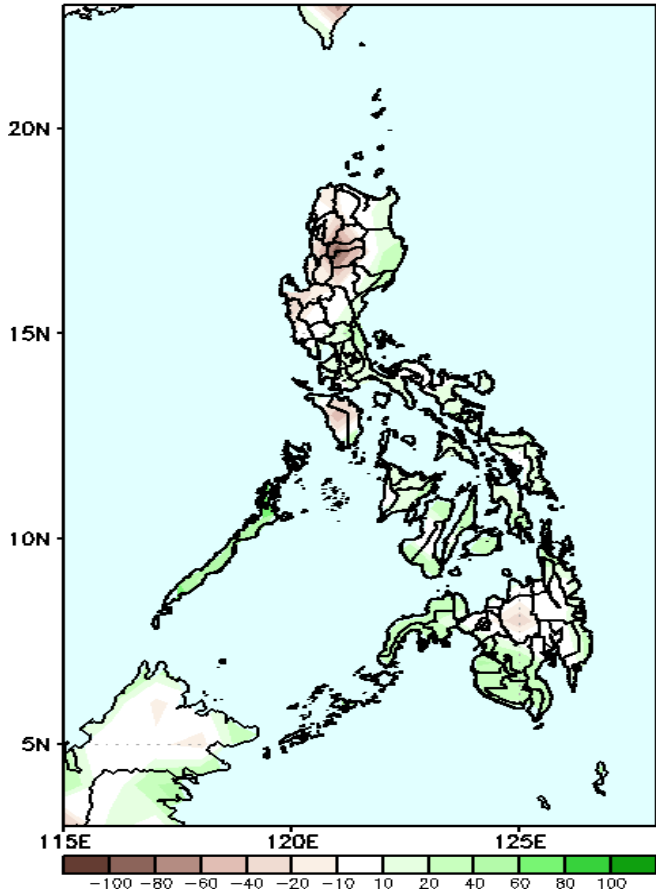


Upper and low level Divergence suggest likelihood of precipitation in most parts of the country. Easterlies affecting most parts of the country attributing to light and moderate rains due to thunderstorms during the forecast period.

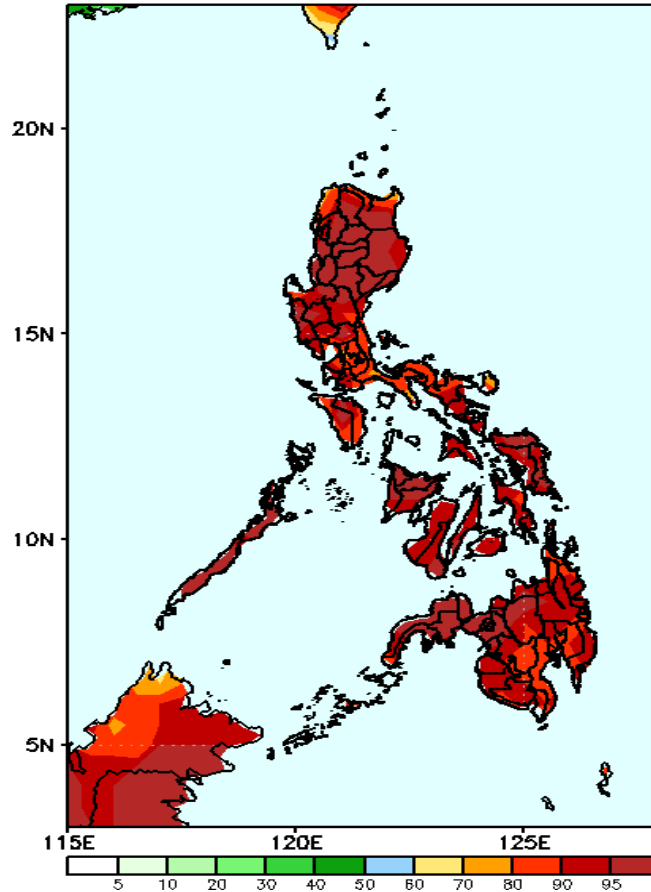
Precipitation Anomaly and Exceedance Probability > 25/50 mm

Week 2: Aug 30-Sep 09, 2021

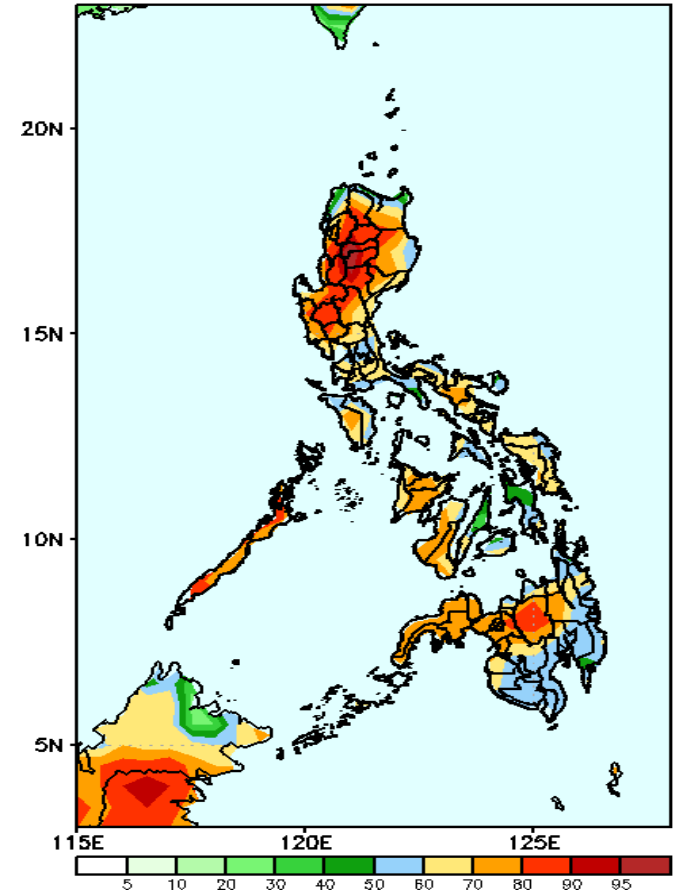
GEFS Week-2 Precip Anomaly
Valid: 20210830 - 20210905



GEFS Week-2 Exceedance Prob. > 25mm
Valid: 20210830 - 20210905



GEFS Week-2 Exceedance Prob. > 50mm
Valid: 20210830 - 20210905



Increase of rainfall of 40-80mm is expected in most parts of the country except in Cordillera Region, Mindoro and Bukidnon where there is 40-80mm rainfall deficit during the forecast period.

High probability of rainfall to exceed 25mm in most parts of the country is expected during the forecast period

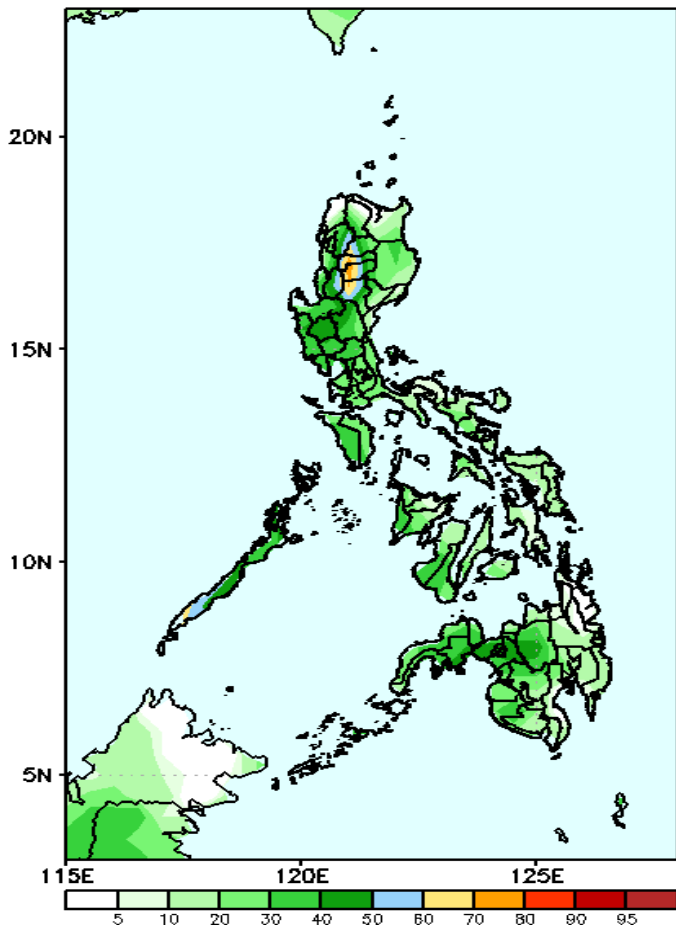
High probability of rainfall to exceed 50mm in most parts of the country is expected during the forecast period



Exceedance Probability > 100/150/200 mm

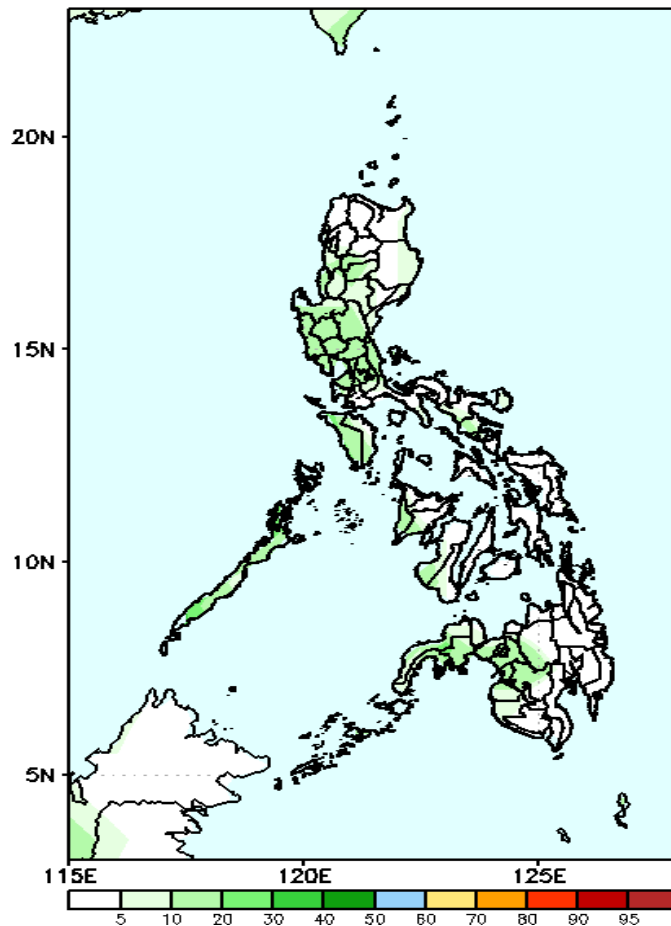
Week 2: Aug 30-Sep 09, 2021

GEFS Week-2 Exceedance Prob. > 100mm
Valid: 20210830 - 20210905



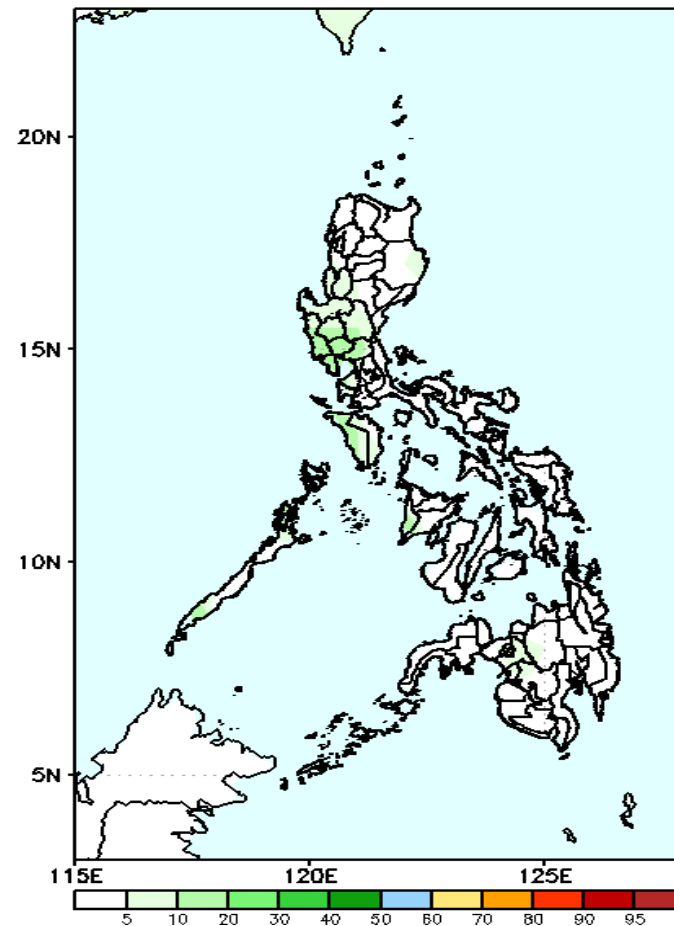
Less probability of rainfall to exceed 100mm in most parts of the country is expected during the forecast period.

GEFS Week-2 Exceedance Prob. > 150mm
Valid: 20210830 - 20210905



Less probability of rainfall to exceed 150mm in most parts of the country is expected during the forecast period.

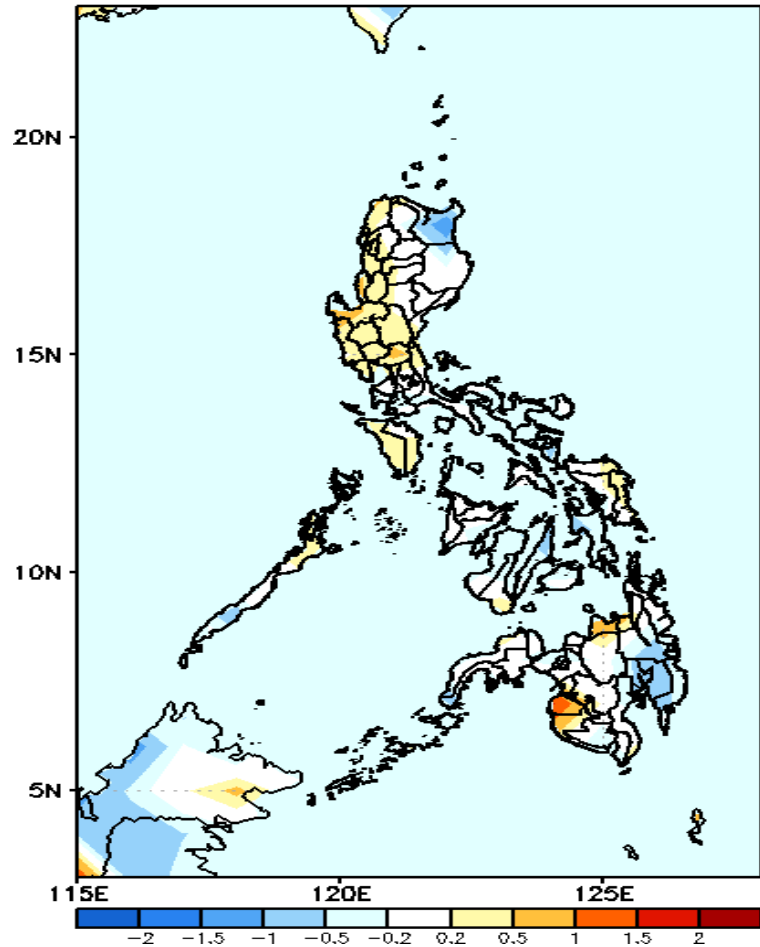
GEFS Week-2 Exceedance Prob. > 200mm
Valid: 20210830 - 20210905



Less probability of rainfall to exceed 200mm in most parts of the country is expected during the forecast period.

GEFS Week-1 & 2 Forecasts: T2m Anomaly

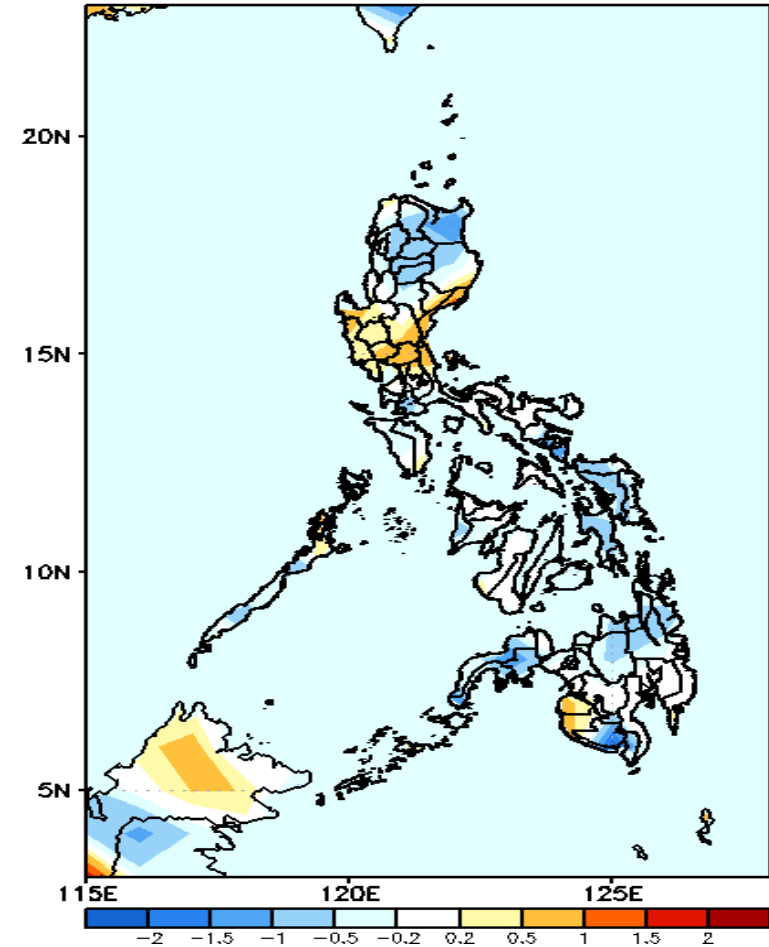
GEFS Week-1 T2m Anomaly
Valid: 20210823 - 20210829



2m Temperature Week 1: Aug 23-29, 2021

Average to slightly warmer average surface air temperature will likely experience in most parts of western & central Luzon, Mindoro, Eastern Visayas, Misamis Oriental, Maguindanao and Sultan Kudarat while cooler than average temperature in Cagayan and Davao Region during the forecast period.

GEFS Week-2 T2m Anomaly
Valid: 20210830 - 20210905



2m Temperature Week 2: Aug 30-Sep 09, 2021

Slightly cooler to cooler than average surface air temperature will likely experience in most parts of the country except in Central Luzon, Maguindanao and Sultan Kudarat where slightly warmer surface temperature is expected during the forecast period.